

# ACAA PRICING

Without all of the information it is not possible to publish exact pricing - here is why:-

**Size** - Whether it be a chair or a bed we need to know the size of course

**Location** - We deliver and install all our products, give training and remove all packaging. As we deliver Australia wide prices can vary if the location you live in is remote. Australia is a big country!

**Health issues** - As a company we offer rebates to clients with multiple health issues as well as disability and aged pension card holders. This can reduce the final price significantly.

**Cash or credit** - We try to help everybody and offer a ZERO deposit and ZERO interest payment plan to try fit into everyones budget. Cash customers may also benefit from additional discounts. As a general rule with rebates applied and delivered to non rural areas, chairs work out from \$22 per week and beds from \$27 per week. Ask about the specials for bed and chair combos!

Generally we prefer to talk to clients to ensure they purchase the right product for them (Heights, Weights and Ailments can affect the choices made). We try to do in as gentle a way as we can and do not pressure clients into a purchase.

If you prefer you can contact us by email or text on the details below.

Remember - We are here to help and assist with improving the quality of your life

## Contact

email: [info@acaq.com.au](mailto:info@acaq.com.au)

Text: 0429 575 625

Tel: 1300 144 961



# NEW YORKER

An electric recliner chair can be reclined or lifted by remote control to sooth your whole body.

This recliner chair, featuring high quality lifting motor and reclining mechanism as well as soothing vibration therapy.

Equipped with heated massage function, is great for relieving your back, neck and shoulder pain. Combined with the assisted lift technology helping to eleviate all aches and pains.

- **Quality Vinyl or Fabric**
- **Variable vibration speeds**
- **Boost circulation**
- **Heating**
- **Leg & foot elevation**
- **Massage function**
- **Dual motors**
- **2x cup holders**
- **Gentle assisted lift**



**Height:** 110 cm

**Width:** 97 cm

**Seat width:** 57 cm

**Seat depth:** 60 cm



**ACAA**  
AGED CARE ASSISTANCE AUSTRALIA





# *ACAA Chair Colours*



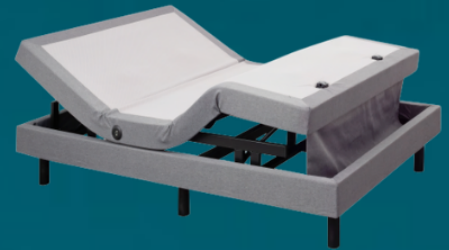
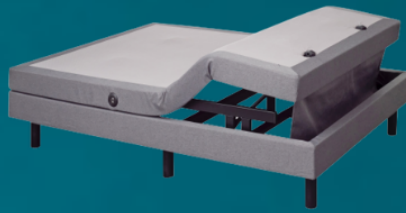
- Tan - Vinyl
- Black - Vinyl
- Dodge - Fabric
- Garnet Red - Fabric
- Ocean Blue - Fabric
- Tobacco Brown - Fabric



# ACAA

AGED CARE ASSISTANCE AUSTRALIA

Our Therapeutic sleep systems provide the benefits of independent head and foot elevation, Gentle massage function, pre-set positions all at the touch of a button.



## Bed Features

- Gentle massage function
- Head & foot elevation
- Zero G position
- Under-bed LED lighting
- Wireless remote control
- USB power outlets
- Low voltage power consumption
- Modern base and frame design
- Wall hugging technology
- Weight tested 180kg

## Mattress

- Two layer 8 inch memory foam
- Cool gel infused
- Temperature regulating
- Anti-roll technology
- Dust mite & mildew resistant
- Hypoallergenic
- Machine Washable Cover



**Beds are available in:**

**Long Single, king Single, Double,  
Standard Queen, Dual Queen,  
Dual King, California King**



# ***BED & MATTRESS SIZING***



**SINGLE**



**KING SINGLE**



**DOUBLE**



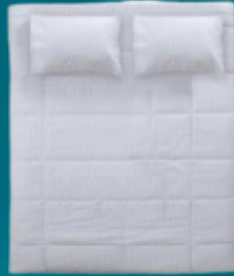
**DUAL QUEEN**



**DUAL KING**



**STANDARD QUEEN**



**CALIFORNIA KING**



**Single** = 36 Inch x 80 Inch (91cm x 203cm)

**King Single** = 42 Inch x 80 Inch (106cm x 203cm)

**Double** = 54 Inch x 74 inch (137cm x 203cm)

**Dual Queen** (*per side*) = 30 Inch x 80 Inch (76cm x 203cm)

**Dual King** (*per side*) = 36 Inch x 80 Inch (91cm x 203cm)

**Standard Queen** = 60 Inch x 80 Inch (152cm x 203cm)

**California King** (*per side*) = 42 Inch x 80 Inch (106cm x 203cm)

